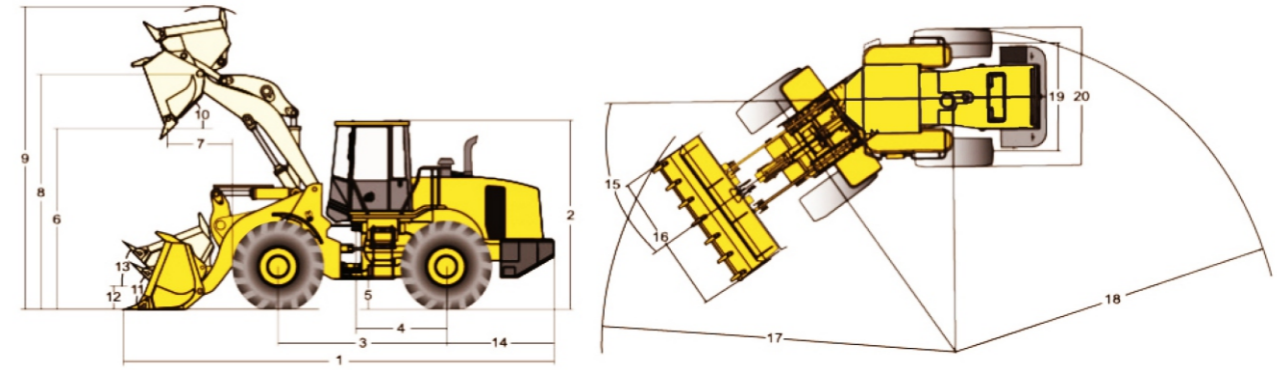


SPECIFICATION



CG930K



1	Length	7132mm	11	Max rollback (at ground)	43.7°
2	Height	3193mm	12	Height of articulation of arm in position	446mm
3	Wheel base	2760mm	13	Max rollback (at carry position)	48°
4	Articulation to rear axle	1445mm	14	Center of rear axle to counter weight	1860mm
5	Ground clearance	390±20mm	15	Turing radius angle	35°
6	Dump height (45°)	2964mm	16	Overall width (bucket)	2551mm
7	Dump clearance	950mm	17	Min.turning radius (bucket carry position)	6159mm
8	Height to hinge pin (full raised)	3825mm	18	Min.turning radius over tires	5504mm
9	Height (full raised)	4860mm	19	Wheel tread	1850mm
10	Dump angle	45°	20	Max.Machine width	2295mm

ITEM	SPECIFICATION	
Operating specification		
Operation weight	10200kg	
Bucket capacity	1.8m ³ (1.8-2.6)	
Rated load weight	3000kg	
Max.traction force	106kN	
Breakout force	102kN	
Max. Grade ability	28°	
Max. Forward speed	33km/h	
ENGINE		
Model	WEICHAI WP6G125E333 Emission standard:Level III / EURO III	WEICHAI WP6C125E201 Emission standard:Level II / EURO II
Type	Electronically controlled, inline, water cooled, four stroke, supercharged	Inline, water cooled, four stroke, supercharged
Peak torque	570N.m	540N.m
Cylinder	6-Ø105 x 130mm	
Rated power	92kW	
Engine rated revolution	2000r/min	
Torque converter and transmission		
Model	CG30	YD130
Torque converter type	Single stage, double turbine Single stage, four components	Electronically controlled, single turbine Single stage, three components
Transmission	Mechanical power gear shift Electro-hydraulic control power shift	
Gears	CVT (continuously variable transmission) 2 forward and 1 reverse	
AXLE		
Main transmission type	1 st level spiral gear deceleration	
Wheel side braking type	Planetary reducer	
Driving axle braking type	Air over oil wet brake	

ITEM	SPECIFICATION
TIRE	
Tire specification	17.5-25-12PR
Front tire pressure	0.34MPa
Rear tire pressure	0.23MPa
Ply rating (PR)	12
Pattern	L-3 / E - 3
HYDRAULIC SYSTEM	
Pressure	19MPa
Lifting time	≤ 5.5s
Cycle time	≤ 9.8s
STEERING SYSTEM	
Type	Full hydraulic articulation
Turning angle(Left/Right)	35° / 35°
Steering pressure	15Mpa
BRAKE SYSTEM	
Braking	Air over oil brake
Parking brake	Manual shaft caliper disc brake
OIL CAPACITY	
Fuel tank	140L
Hydraulic oil tank	102L
Engine oil tank	16L
Torque converter and transmission oil capacity	27L
Front and Rear axle oil capacity	23L / 23L