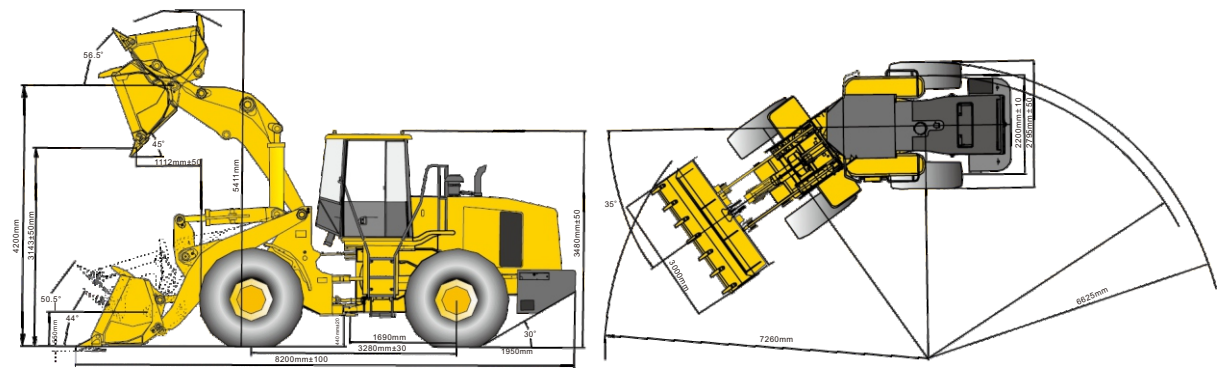


Bucket capacity : 3.3m³
 Engine rate : 170 KW
 Bucket load : 5500KG



CG958K



Note : The following data is for reference only, the actual parameters will be adjusted according to the specific configuration.

Item	Standard arm Dry axle 2F/1R	Standard arm Dry axle 4F/3R	Standard arm Wet axle 4F/3R	Item	Standard arm Dry axle 2F/1R	Standard arm Dry axle 4F/3R	Standard arm Wet axle 4F/3R
Operating mass	17600kg	17800kg	17800kg	Grade ability	30°		
Bucket capacity	3.3m ³			Max. dump height	3143±50mm		
Rated load weight	5500kg			Dump clearance @ Maximum lift	1033±50mm		
Traction force	172kN			Max forward speed	36km/h	39km/h	39km/h
Breakout force	168kN			Overall size	8200mmx3000mmx3480mm		
Fuel tank capacity	310L			Hydraulic oil capacity	128L		
Engine crankcase oil	WEICHAJ 24L			Transmission & Torque converter oil	34L		
Engine crankcase oil	SHANGHAI 27L			Front & Rear axle	Dry 26L / 26L		Wet 40L / 40L
Engine				Steering System			
Model	WEICHAJ WP10G220E343 Emission standard: Level II (EURO II)	WEICHAJ WD10G220E23 Emission standard: Level II (EURO II)	SHANGHAI SC11CB220G2B1 Emission standard: Level II (EURO II)	SHANGHAI SC11CB210G2B1 Emission standard: Level II (EURO II)	Type	Full hydraulic flow amplification hinge joint steering	
Type	Electronically controlled, inline, four-stroke, supercharged engine.	Inline, four-stroke, water cool, supercharged engine.	Inline engine, water cool, dry type cylinder jacket, direct injection.	Inline engine, water cool, dry type cylinder jacket, direct injection.	Steering angle	35°(Left & Right)	
Mini fuel consumption rate	210g / kw.h	208g / kw.h	227g / kw.h	227g / kw.h	Min. turning radius	Bucket outboard 7260mm Rear tire outboard 6625mm	
Engine noise	GB14097-1999	≤117dB	≤116dB	≤116dB	Braking System		
Idle running	750±20r/min	690-700r/min	780±25r/min	780±25r/min	Braking	Air-Over-Oil caliper disc brake on all four wheels	Wet type multi-disk braking system
Cylinder - Bore x stroke (mm)	6-Ø126 x 130mm	6-Ø126 x 130mm	6-Ø121 x 152mm	6-Ø121 x 152mm	Parking brake	Caliper type brake	Drum brake
Peak torque	980N.m 1300-1500 r / min	980N.m 1300-1500 r / min	920N.m 1400 r / min	960N.m 1400 r / min	Front & Rear Drive Axle		
Rated power	170kW	170kW	170kW	170kW	Torque converter type	Four-element, twin turbine	Three-element, single turbine
Rated	2000r/min	2000r/min	2200r/min	2000r/min	Transmission	CG power control shift gearbox	Electric-hydraulic control shift gearbox
Transmission System				Front & Rear Drive Axle			
Torque converter type		Four-element, twin turbine		Three-element, single turbine		Main transmission type	1st Level spiral gear deceleration
Transmission		CG power control shift gearbox		Electric-hydraulic control shift gearbox		Wheel-Side braking type	Planet deceleration
Gears speed km/h		Speed 1 2 F 11.4 36 R 15.3	Speed 1 2 3 4 F 6.2 11.2 23.5 39 R 6.2 11.2 23.5	Drive axle braking type		Dry axle / Dry axle / Wet axle	
Hydraulic Working System				Tire			
Working system pressure		19Mpa		Specification		23.5-25-18PR	
Lifting time of working implement		5.8S		Front tire pressure		0.3Mpa	
Action time of working implement		≤10.0S	≤10.0S	≤10.0S	Rear tire pressure		0.2Mpa
Control		Joy stick		Model		E3 / L3	