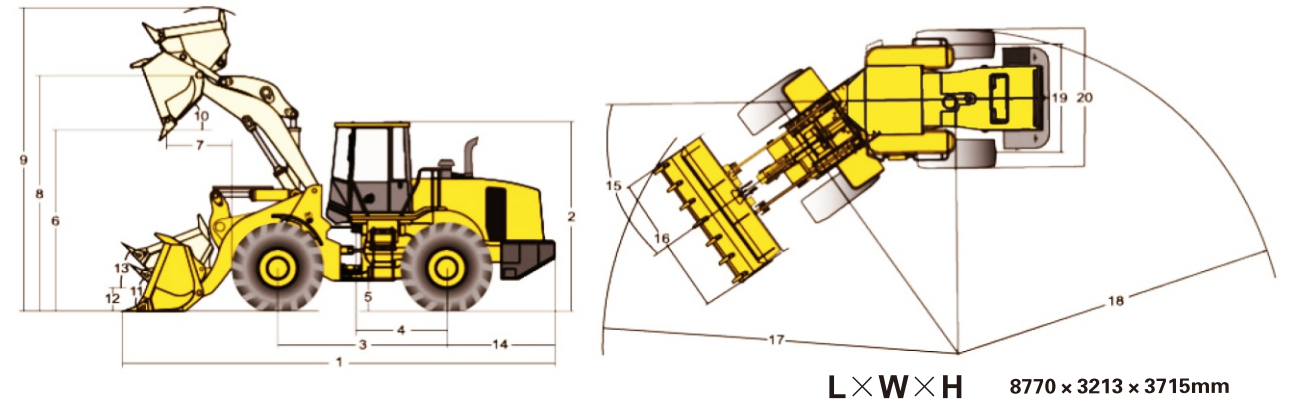


SPECIFICATION



CG970K



DIMENSION

1	Length	8770mm	11	Max rollback (at ground)	45.6°
2	Height	3715mm	12	Height of articulation of arm in position	550mm
3	Wheel base	3350mm	13	Max rollback (at carry position)	51°
4	Articulation to rear axle	1675mm	14	Center of rear axle to counter weight	2219mm
5	Ground clearance	450 ± 20mm	15	Turing radius angle	36°
6	Dump height (45°)	3246mm	16	Overall width (bucket)	3213mm
7	Dump clearance	1281mm	17	Min.turning radius (bucket carry position)	7483mm
8	Height to hinge pin (full raised)	4379mm	18	Min.turning radius over tires	6695mm
9	Height (full raised)	5790mm	19	Wheel tread	2280mm
10	Dump angle	45°	20	Max.Machine width	2973mm

SPECIFICATION

ITEM	SPECIFICATION		ITEM	SPECIFICATION
Operating specification				
Operation weight	24000kg		Tire specification	26.5-25-24PR
Bucket capacity	4.2m ³ (3.5m ³ ~5.5m ³)		Front tire pressure	0.36MPa
Rated load weight	7000kg		Rear tire pressure	0.24MPa
Max.traction force	225kN WP12G310E302	230kN WD12G290E21	Ply rating (PR)	24
Breakout force	220kN		Pattern	E-3 / L-3
Max. Grade ability	27°		HYDRAULIC SYSTEM	
Max. Forward speed	39km/h		Control	Joy stick (Pilot control)
ENGINE				
Model	WP12G310E302 China III (Euro III)	WD12G290E21 China II (Euro II)	Pressure	22.3MPa
Type	Electronically controlled, inline, four stroke, supercharged		Lifting time	≤ 6s
Cylinder	6- φ 126 × 155mm		Cycle time	≤ 10.8s
Peak torque	1450N.m (1300 - 1500 r/min)	1300N.m (1300 - 1500 r/min)	STEERING SYSTEM	
Rated power	226kW		Type	Full hydraulic articulation
Engine rated revolution	2100r/min		Steering pressure	17.2MPa
Torque converter and transmission				
Model	CG208-7		BRAKE SYSTEM	
Torque converter type	Three-element, single turbine, single stage		Braking	Full hydraulic brake
Transmission	Chengong Electro-hydraulic control power shift		Parking brake	Manual shaft caliper disc brake
Gears	4 Forward 3 Reverse (Speed 6.8 / 12 / 21.5 / 39)		OIL / LIQUID CAPACITY	
AXLE				
Main transmission type	1 st level spiral gear deceleration		Fuel tank	385L
Wheel side braking type	Planetary reducer		Hydraulic oil tank	128L
Driving axle braking type	Air over oil wet brake		Engine oil tank	24L
			Torque converter and transmission oil capacity	45L
			Front and Rear axle oil capacity	43L/43L
			Radiator	42L