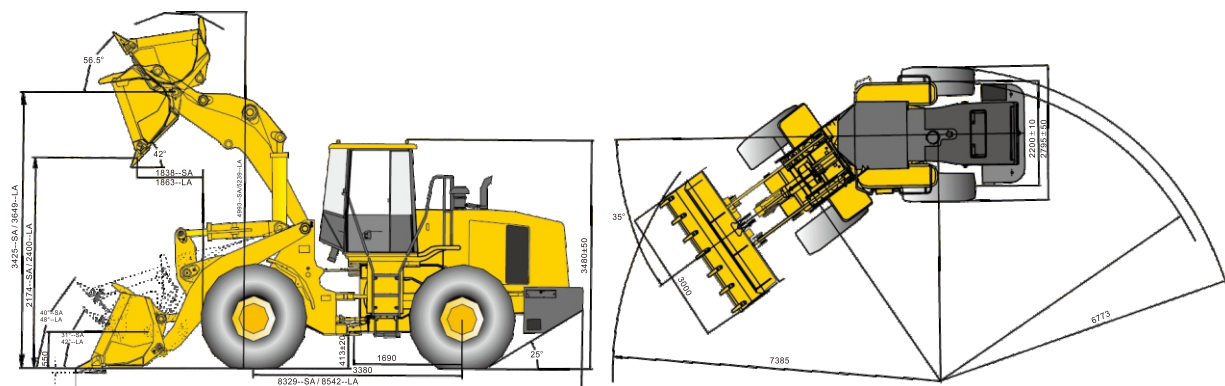


整机参数

/ Machine parameters



Note : The following data is for reference only, the actual parameters will be adjusted according to the specific configuration.
Standard arm---SA / Long arm---LA

Item	Standard arm Dry axle 2F/1R	Standard arm Dry axle 4F/3R	Standard arm Wet axle 4F/3R	Item	Standard arm Dry axle 2F/1R	Standard arm Dry axle 4F/3R	Standard arm Wet axle 4F/3R		
Operating mass	23600kg	23800kg	23800kg	Grade ability	25°				
Bucket capacity	4.5m³			Max. dump height	2174mm-Standard arm 2400mm-Standard arm				
Rated load weight	8000kg			Dump clearance @ Maximum lift	1838mm-Standard arm 1863mm-Standard arm				
Traction force	168kN			Max forward speed	36km/h	39km/h	39km/h		
Breakout force	206kN			Overall size	8329mmx3000mmx3480mm 8542mmx3000mmx3480mm				
Fuel tank capacity	310L			Hydraulic oil capacity	128L				
Engine crankcase oil	WEICHAH 24L			Transmission & Torque converter oil	34L				
Engine crankcase oil	SHANGHAI 27L			Front & Rear axle	Dry 26L / 26L		Wet 40L / 40L		
Engine				Steering System					
Model	WEICHAH WP10G220E343 Emission standard: Level II (EURO II)	WEICHAH WD10G220E23 Emission standard: Level II (EURO II)	SHANGHAI SC11CB220G2B1 Emission standard: Level I (EURO II)	SHANGHAI SC11CB2101GB1 Emission standard: Level I (EURO II)	Type	Full hydraulic flow amplification hinge joint steering--15.5MPa			
Type	Electronically controlled, inline, four-stroke, supercharged engine.	Inline, four-stroke, water cool, supercharged engine.	Inline engine, water cool, dry type cylinder jacket, direct injection.	Inline engine, water cool, dry type cylinder jacket, direct injection.	Steering angle	35°(Left & Right)			
Mini fuel consumption rate	210g / kw.h	208g / kw.h	227g / kw.h	227g / kw.h	Min. turning radius	Bucket outboard 7385mm Rear tyre outboard 6773mm			
Engine noise	GB14097-1999	≤117dB	≤116dB	≤116dB	Braking System				
Idle running	750±20r/min	690-700r/min	780±25r/min	780±25r/min	Braking	Air-Over-Oil caliper disc brake on all four wheels		Wet type multi-disk braking system	
Cylinder-Bore x stroke (mm)	6-Ø126 x 130mm	6-Ø126 x 130mm	6-Ø121 x 152mm	6-Ø121 x 152mm	Parking brake	Caliper type brake		Drum brake	
Peak torque	980N.m 1300-1500 r/min	900N.m 1300-1500 r/min	920N.m 1400 r/min	960N.m 1400 r/min	Transmission System				
Rated power	162kW / 217.2hp	162kW / 217.2hp	162kW / 217.2hp	162kW / 217.2hp	Torque converter type	Four-element, twin turbine		Three-element, single turbine	
Rated	2000r/min	2000r/min	2200r/min	2000r/min	Transmission	CG power control shift gearbox		Electric-hydraulic control shift gearbox	
Transmission System				Front & Rear Drive Axle					
Torque converter type				Main transmission type				1st Level spiral gear deceleration	
Transmission				Wheel-Side braking type				Planet deceleration	
Gears speed km/h				Drive axle braking type				Dry axle / Dry axle / Wet axle	
Hydraulic Working System				Tire					
Working system pressure				Specification				23.5-25-32PR	
Lifting time of working implement				Front tire pressure				0.57Mpa	
Action time of working implement				Rear tire pressure				0.4Mpa	
Control				Model				E3 / L3	